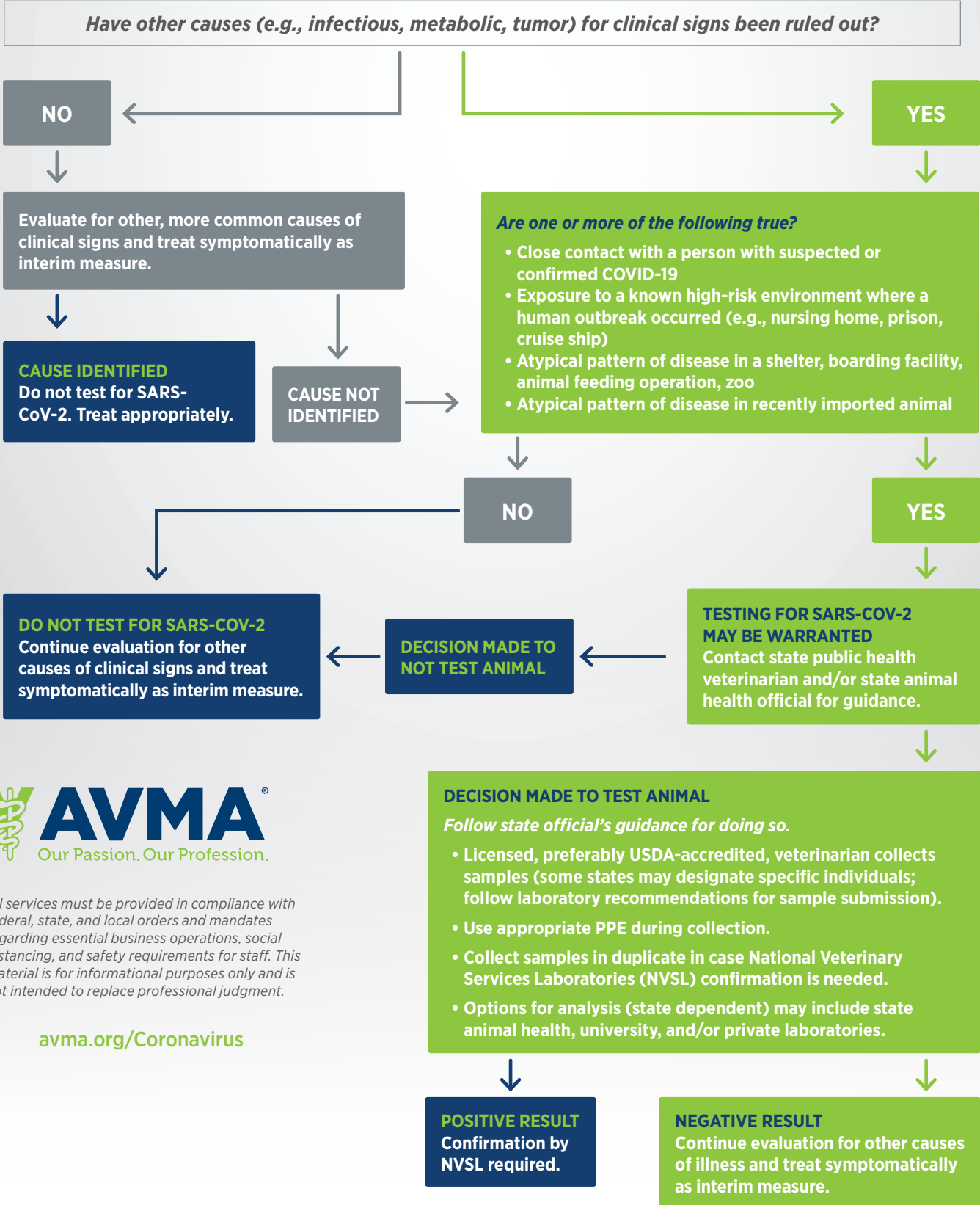


TESTING FOR SARS-COV-2

Determining when to test veterinary patients

Veterinary patient presents with clinical signs consistent with infection with SARS-CoV-2 (e.g., fever, lethargy, nasal/ocular discharge, sneezing, coughing, breathing difficulty, vomiting, diarrhea)



All services must be provided in compliance with federal, state, and local orders and mandates regarding essential business operations, social distancing, and safety requirements for staff. This material is for informational purposes only and is not intended to replace professional judgment.

avma.org/Coronavirus